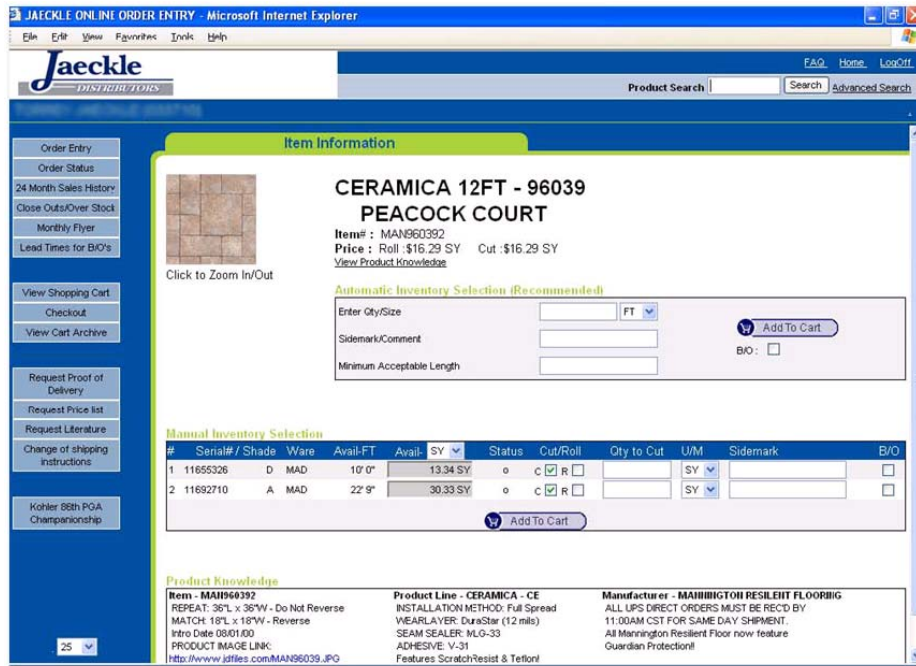


<http://www.jaeklewholesale.com/netdata/d24.mbr/login>

Features

Benefits

- **Order Entry**
 - Place orders online
- **Order Status**
 - Check the status of pending orders and view invoiced orders (coming soon). Search by PO# and/or Sidemark.
- **Product Information & Images**
 - View product images and information such as installation information, pattern matches & repeats, adhesive coverage rates, and more. Click on links to view product images and adobe PDF product documentation files.
- **Sales History**
 - View your purchase history
- **Request Information**
 - Email requests for proof of delivery, price lists, literature, shipping changes
- **24/7/365 Access to Inventory and Order Status**
 - Access inventory and other information any day, any time!
- **Save Time**
 - No need to call or put something off until Monday morning
- **Order Acknowledgments**
 - View on-screen and print order acknowledgments on all your orders
- **Product Information**
 - Instant availability to product information — Installation info, images, etc.
- **Roll Optimization**
 - Shop vinyl roll sizes to purchase rolls & roll balances that can save you money
- **Related Items Feature Aids in Quick Order Entry**
 - Use the “Related Items” feature to bring up a list of all items related to a parent item and enter your order for multiple related items on one screen



Phone (608) 838-5400

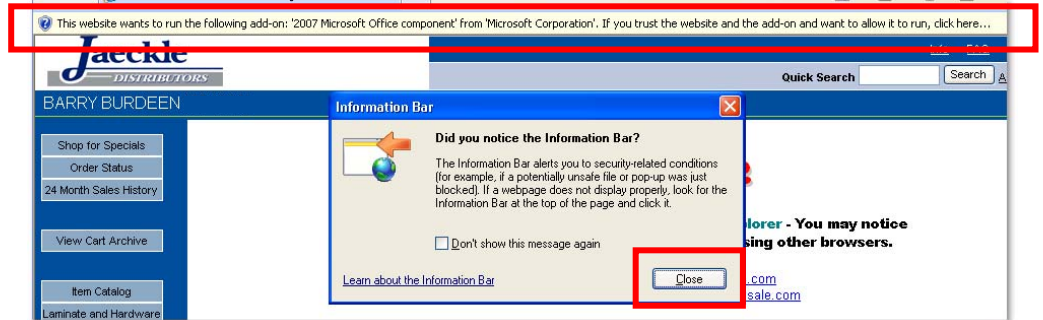
4101 Owl Creek Drive, Madison, WI 53718-4407

Madison • La Crosse • Chicago • Minneapolis • St. Louis

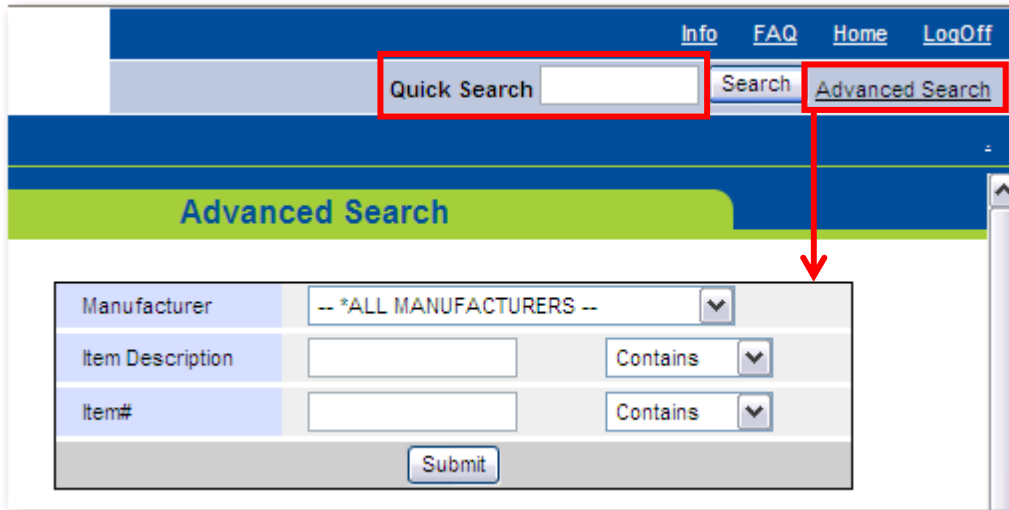
Login to your account with your User Name and Password.

Periodically we will display announcements on the "Home" page.

The first time you use our online ordering site you may be prompted to install an ActiveX control. This is normal and Okay!



- **Quick Search**
 - Searches the order item database and returns any matches to your entry
- **Advanced Search**
 - A better way of searching for you product. Allows you to narrow down your search to specific manufacturers with Item Description and/or Item#



Example of results:

The screenshot displays the 'Advanced Search Results' page. At the top, a search form shows 'Manufacturer' set to 'HELMITIN INC'. Below the form is a 'Load to Order Entry' button. The main content is a table of search results:

Item#	Description	Prices	Qty	Order
HELGUNTIP6501	CANISTER GUN W/6501 SOLV TIP	\$209.560 EA	3 EA	<input type="checkbox"/>
HELHOSE12	CANISTER HOSE 12 FT	\$61.760 EA	5 EA	<input type="checkbox"/>
HELHOSE18	CANISTER HOSE 18 FT	\$79.410 EA	2 EA	<input type="checkbox"/>
HELHOSE6	CANISTER HOSE 6 FT	\$41.910 EA	3 EA	<input type="checkbox"/>
HELCITRUSCLEANER	CITRUS CLEANER AEROSOL 17 OZ		EA	<input type="checkbox"/>
HEL690DRUM	FLAM SLV/CLN TOULENE DRUM CLR		EA	<input type="checkbox"/>
HEL6901	FLAM SLV/CLN TOULENE 1GAL CLR	\$56.110 EA	9 EA	<input type="checkbox"/>
HEL6905	FLAM SLV/CLN TOULENE 5GAL CLR	\$56.110 EA	24 EA	<input type="checkbox"/>
HEL685DRUM	FLAM SOLVENT/CLEANER DRUM CLR	\$472.180 EA	1 EA	<input type="checkbox"/>
HEL6851	FLAM SOLVENT/CLEANER 1GAL CLR	\$22.270 EA	15 EA	<input type="checkbox"/>
HEL6855	FLAM SOLVENT/CLEANER 5GAL CLR	\$56.260 EA	5 EA	<input type="checkbox"/>

Annotations: 'Stock Quantity' points to the 'Qty' column, and 'Your Price' points to the 'Prices' column. A sidebar on the left contains navigation links like 'Order Entry', 'Shop for Specials', 'View Shopping Cart', etc. A 'Show more items per page' button is at the bottom of the sidebar.

Change, Remove or Replace items.

Click on item for more information such as Product Knowledge.

Continue shopping or checkout.

You may archive items you frequently purchase.

Shopping Cart / Order Review

Item	Serial#	Tag/B/O	Qty/Size	Price	Sub-Total	Options
AME1950HBRBBP SOLID BRASS HOLLOW KNOB 1 1/4" ** DISCONTINUED AT AMEROCK ** • Stock is OK from warehouse(s) : MAD			2 PC .08 CT	\$2,983 PC	\$5.97	Change Remove Replace
HEL6651 FLAM SOLVENT/CLEANER 1GAL CLR • Stock is OK from warehouse(s) : MAD			1 EA .25 CT	\$22,270 EA	\$22.27	Change Remove Replace
FRA2104 LAMINATE FLOORING GLUE 16 OZ • Stock is OK from warehouse(s) : MAD			1 EA .08 CT	\$6,050 EA	\$6.05	Change Remove Replace
Total : \$34.29						
<input type="button" value="Checkout"/> <input type="button" value="Clear Order"/> <input type="button" value="Archive Cart"/>						
To Continue Shopping, Enter Next Search Here :						<input type="button" value="Search"/>

Checkout: Step 1

Click the **Continue** button to go to step 2 of the checkout process. If you need to make changes, just click on the **View Shopping Cart** link located in the left navigation area (not pictured).

Checkout: Step 1 - Item Confirmation

Item Confirmation Order Information Order Confirmation

Item	Serial#	Tag	B/O	Qty/Size	Price	Sub-Total
AME1950HBRBBP SOLID BRASS HOLLOW KNOB 1 1/4" ** DISCONTINUED AT AMEROCK ** • Stock is OK from warehouse(s) : MAD				2 PC .08 CT	\$2,983 PC	\$5.97
HEL6651 FLAM SOLVENT/CLEANER 1GAL CLR • Stock is OK from warehouse(s) : MAD				1 EA .25 CT	\$22,270 EA	\$22.27
FRA2104 LAMINATE FLOORING GLUE 16 OZ • Stock is OK from warehouse(s) : MAD				1 EA .08 CT	\$6,050 EA	\$6.05
Total : \$34.29						
<input type="button" value="Continue"/>						

Checkout: Step 2

Add your P.O.# and other appropriate information.

Please note that the **Special Instructions** and **Shipping Instructions** are for **your** use only. This information will not be seen by customer service or our warehouse employees. Call customer service if you do have special handling/shipping instructions.

New: Click on the calendar icon if you would like to select a different shipping date. Your options will be highlighted in yellow.

Checkout: Step 3

Activate: Order is processed
24-Hour Hold: Items in shopping cart will be held for about 24 hours at which time the order will automatically delete unless activated.
Cancel Order: Cancels order
Edit Shipping Information: Allows you to edit your shipping address

It's always important to make note of your reference number.

Order Completion:

Make note of your Reference#, or use the Printer Friendly button to print a copy of your order.

Order Completion

Jaeckle
DISTRIBUTORS

Reference# 1982040 has been Activated.

Reference# :	1982040	Ship Date :	4/18/08
P.O.# :	TEST	Ship To :	
Order Date :	4/15/08	Ship Via :	PICK UP
Tag :	S/M DO NOT PICK	Shipping Instructions :	
Special Instructions :			

Line#	Item Description	Ware	Serial#	Quantity	UOM	\$Price	\$Total
0010	GRATEST GRASS TEST PART NUMBER	MIL	1	50.00	EA	\$.001	\$.05
TotalS : .05							

[Printer Friendly](#)

Here's an example of a Printer Friendly screen.

Jaeckle
DISTRIBUTORS

Reference# 1982040 has been Activated.

Reference# :	1982040	Ship Date :	4/18/08
P.O.# :	TEST	Ship To :	
Order Date :	4/15/08	Ship Via :	PICK UP
Tag :	S/M DO NOT PICK	Shipping Instructions :	
Special Instructions :			

Line#	Item Description	Ware	Serial#	Quantity	UOM	\$Price	\$Total
0010	GRATEST GRASS TEST PART NUMBER	MIL	1	50.00	EA	\$.001	\$.05
TotalS : .05							

[Print Window](#) [Close Window](#)

Order Status

Order Search Criteria
Allows you to search P.O.#,
Reference# and/or a Tag.

Unprocessed Orders
(Reserved Orders)

Processed Orders

Different Viewing
Options

The screenshot shows the 'Order Status' web application interface. At the top, there is a header with the title 'Order Status'. Below the header, a message states: 'You are currently setup to view all of your open orders, and invoiced orders for the past 14 days. Number of days of Invoiced Orders to show : 14 [dropdown] [Reload]'. To the right of this message is a search box titled 'Order Search Criteria' with input fields for 'P.O.#', 'Reference#', and 'Tag', and 'Submit' and 'Clear' buttons. Below the search box are two tables of orders. The first table is titled 'Unprocessed Orders' and has columns: P.O.#, Ref#, Tag, Order Date, Ship Date, Status, and Options. The second table is titled 'Processed Orders' and has the same columns. Red arrows from the text boxes above point to specific elements: one points to the search box, one to the 'Unprocessed Orders' table, one to the 'Processed Orders' table, one to the 'Expand' and 'Printer Friendly' links, and one to the 'Options' column in the processed orders table.

Unprocessed Orders						
P.O.#	Ref#	Tag	Order Date	Ship Date	Status	Options
1234567890	1981564	DOCK IN BACK OF BUILDING		4/14/08	OPEN	Details

Processed Orders						
P.O.#	Ref#	Tag	Order Date	Ship Date	Status	Options
HARVEY	1917352	Credit/Adj to Inv# 968986, Order# 419432.	1/22/08	1/23/08	OPEN	Details
BALLD-P	1965904	BALLD-P	3/26/08	4/01/08	INVOICED	Details
MENDJ-P7	1966722	MENDJ-P7	3/26/08	4/16/08	SEE DETAILS	Details
UPDATE	1967888	SWOG	3/28/08	4/02/08	BACK ORDER	Details
PIASD-K	1968670	PIASD-K	3/28/08	4/11/08	INVOICED	Details
CASLM-K	1968702	CASLM-K	3/28/08	4/16/08	SEE DETAILS	Details
JOE K	1970004	EM/CW SM MILWAUKEE STORE	3/31/08	4/02/08	BACK ORDER	Details
WALKJ-K	1970382	PAUL NON STOCK - NO RETURNS	4/01/08	4/01/08	INVOICED	Details
BALLD	1970888	HARVEY	4/01/08	4/01/08	BEING PICKED	Details
NAGLD-P	1970970	NAGLD-P	4/01/08	4/02/08	INVOICED	Details
ARENJ	1973349	SM ARENJ	4/03/08	4/04/08	PICKED/CUT	Details
SHOP	1973524	HARVEY	4/04/08	4/04/08	PICKED/CUT	Details
MARKG	1976090	MARKG	4/08/08	4/09/08	SEE DETAILS	Details
NAGLD-P	1976203	NAGLD-P	4/08/08	4/09/08	INVOICED	Details
VEITB	1977575	VEITB	4/09/08	6/11/08	OPEN	Details

Tips & Tricks

The **easiest and most powerful way** to search for a product is to use the Product Search box in the upper right-hand corner of the screen. Type in a word or color number and the system will return all items that have that word or number anywhere in the item# or description fields. You may click on any item for more information, or quickly **load any number of selected items into an order.**

EXAMPLE 1:	Type in the word " Jamoca " and several Hydroment grout and related items come up, all with the color "jamoca" in the description
EXAMPLE 2:	Type in the number " 96101 " and a few Mannington vinyl patterns come up, along with a Florida Tile item
EXAMPLE 3:	Type in " FLO9959 " and the system finds all sizes for Florida Tile color number "9959"
EXAMPLE 4:	Type in " MLA56092 " and the system finds an exact Mannington Laminate item# match and brings up all the information related to that item#

You may also perform **advanced searches** which allow you to **narrow down your search to specific manufacturers.** Searching by the "**Item# or Partial Item#**" field with the "**contains**" option works best. The system will search within the selected manufacturer only for any item numbers or item descriptions containing the word or number you specify. This search method **may work best for items where the search word is likely to be used frequently within several manufacturers, such as "gray" or "12x12",** which would return too many results using the general non-manufacturer specific product search.

Related Items

Likely, many items you purchase are frequently purchased with accessories - for example, a ceramic tile order usually has a field tile and a trim tile component. We have set most of our Wood, Laminate Flooring, and Ceramic Tile items up to allow for quick and easy order entry for you (we are working getting all items with trim to be set up this way). Here's how it works:

EXAMPLE 1:	You need to order 100 sq. ft. of Mannington Laminate 56092 (item# MLA56092). You search for and find the item number using any of the available search techniques. Click on the item in the search results. This will bring up the "Item Information" screen. Type in the qty needed in the "Automatic Inventory Selection" area, and then click on "Related Items." This will bring up a list of all the associated trim items for that pattern, allowing you to place your entire order in one easy step.
-------------------	---

NOTE: The "Related Item" option will only appear if the specified item number has been set up with this feature.

Obtaining ETA on a Backorder

When you order an item that must be backordered, you may **click on the "Lead Times for B/O's" link** that shows you our incoming shipping schedule for all of our major manufacturers. This schedule will **tell when your order will be in to our warehouse** ready for shipment, and **when the cutoff is for getting product on each shipment.** If your order is placed by the cutoff day and time, your order will be brought in on that shipment. We will always notify you of any unforeseen delays (backorder at MFR, etc.). You may **contact our purchasers directly** with any questions by clicking on the purchaser's name, and an email window will open automatically for you.

Important Shipping Information

When you place an order on-line, your order will automatically default to "Ship As Available" via your normal delivery method on the next available date. If you prefer your order to "Ship Complete" rather than "As Available", please [email](#) us with your reference number requesting this change. If you wish to take delivery via UPS or Common Carrier, you may change the "Ship Via" and "Request Date" as needed; However, if you wish to take delivery via Our Truck on a date other than your next delivery date, please email us to make that change for you to avoid any problems. **In short, it is not advisable to change your delivery date unless your shipping method is UPS or Common Carrier.**

Storing Frequently Ordered Products

If you have a **group of items you frequently order for stock**, you can set up and store a shopping cart with those items and usual order quantities. Simply **build your shopping cart** and once done **click on "Archive Cart"**, and give your cart a name (such as "Stock Adhesives"). Then whenever you want to activate that shopping cart again, simply click on **"View Archive Cart"**, change any quantities you need to, delete any items you don't want, and proceed with your order. Your archive cart will stay out there for you until you delete it.

Methods of Order Entry

Our site operates on a **"shopping cart"** mode, similar to other on-line sites you may have shopped at. This means that you can **continue adding items to your order**, view your shopping cart at any time, and **checkout only after you have added all items to your order**.

Ordering items **can be done in any number of ways**. Generally any time you **search for an item**, once you find the item you want you will be **given the option of loading it into your order, or entering a quantity** to order it right then and there.

While we do have an **"Order Entry"** link in the upper left-hand corner of the screen, it is **not necessary to click on that** to begin ordering. **Simply type in a word or number in the "Product Search" box** and begin ordering!

Product Knowledge / Item Information

Various items have **installation, product, image, or other information** attached to them. This information can be viewed by searching for the item and then **clicking on the item** on the search results page. You can also click on an item# at any time throughout the order entry process to view it. The "Product Knowledge" will always be at the bottom of the "Item Information" screen.

Examples of information that you will find in this area are (using Mannington Vinyl as an example): Pattern match and repeats, seam sealer, adhesive, installation method, and wearlayer. Other items may show adhesive coverage rates, warranty info, and any other applicable useful information.

Shopping for "Specials"

You can **search for deals and specials by clicking on the "Shop for Specials" link** on the left-hand side of the screen. This will open a powerful search screen where you can search for specials, closeouts, drops, and overstocks by Product Category, Manufacturer, and/or product description, and even limit your search to specific quantity and price ranges.

You may **view product images** (if available for that item) by clicking on any individual item to see the product details. In order to ensure you receive the "Specials" price, make sure to **manually select the inventory** - do not use the automatic inventory selection.

The key to successful searching is to **use key words that you believe would be part of the item number or item number description**. A few helpful hints to keep in mind to help you quickly find what you are looking for:

Ceramic Tile

The size always appears in the description, such as "12X12" or "13X13" or "8X8" etc.

Wood

Descriptions usually contain the species of the wood, such as "Oak" or "Maple" or "Ash" etc.

Vinyl

Narrow your search down to manufacturer "Mannington Resilient Flooring" and if need be narrow it down to descriptions containing "12FT" or "6FT" if you have a specific width you desire. Second quality material will always have an item# ending in "S" as well as having "seconds" or "2nds" in the item# description.

Multiple Manufacturer Searching

If you want to search two or three manufacturers at once, utilize the "begins with" feature along with the "or" feature and enter the two or three 3-character MFR codes of the manufacturers you want to search.

Item Number Methodology

All of our item numbers are composed of a three character manufacturer code followed by up to 13 more characters designating the specific item. The three character MFR code is usually always simply the first three letters of the manufacturer's name, with a few noted key exceptions below. The item# portion will always be the manufacturer's item# or color# (if they have one), sometimes followed by a size when applicable. Common size exceptions are listed below.

NOTE: For some nonstock and obscure items, we may not have part numbers in our system. Those orders will have to be placed with our Customer Service Department.

Non-Standard MFR Codes	Common Size Suffixes	Item# Examples
Mannington Laminate = MLA Mannington Wood = MWD Mannington Ceramic = MCE (Mannington Vinyl and VCT = MAN)	Vinyl 6=6ft. wide 2=12ft. wide Ceramic 12=12x12 13=13x13 16=16x16 18=18x18 88=8x8 66=6x6 612=6x12 [blank]=4x4 wall	Florida Tile color 9901 P43C9 Bullnose FLO9901P43C9 Florida Tile color 100 6x6 FLO10066 Mannington pattern 41127 12ft. MAN411272 Mannington Ceramic item CA1T12 MCECA1T12

Phone (608) 838-5400

4101 Owl Creek Drive, Madison, WI 53718-4407

Madison • La Crosse • Chicago • Minneapolis • St. Louis

Exact Item Numbers

Once you get the hang of it and start to learn our item number logic, things can become more efficient for you. For example, you can then:

- Click on the "Order Entry" button and enter multiple lines on an order at once by simply typing in the item numbers, with no need to search.
- Type the full item# into the "Product Search" box to go straight to that item number and view all information related to it

Manual vs. Automatic Inventory Selection

On some screens you are given a list of our current inventory and given the option of manually placing your order for one of the specific inventory records, or letting the computer automatically choose for you. We would greatly appreciate it if (unless you need to select a specific roll or shade) you would **allow the software to automatically select the inventory for you**. This allows us to have the optimal inventory selected to fill your order, which in turn allows us to service you better on future orders. For example, this can prevent a situation whereby someone would need a 6 ft. cut of vinyl from selecting it off of a brand new roll, when there may be a more optimal roll to cut it off of. This allows us to keep larger rolls and shades in inventory for you so we have the ability to service your larger orders when they come in.

Planned Site "Downtime"

This site will be inaccessible every morning from about 3:00am - 5:00am as it processes "night jobs." As our system processes these required nightly jobs, no one can log onto the system.

What Can't I Do on This Site?

While we are constantly trying to improve this site and make it more useful for you, there are still some things that at this time you cannot do from this site that you will instead need to contact our [Customer Service](#) department for.

- You cannot enter orders for **Direct Shipment** from our supplier to you.
- You cannot enter **Special Orders** for products for which we do not have an item# in our system.
- You may not be able to **place backorders for discontinued items**, as this requires us to check stock at the factory first to make sure stock is still available.
- You are **not able to place orders for stock from other warehouses other than your home warehouse or our Madison warehouse**, due to our hub-and-spoke logistical system. If you wish to order product from another warehouse for UPS or Common Carrier shipment, you may do so by contacting our [Customer Service](#) department.